

QUALITY IS OUR PROMISE.

Knox Fertilizer leads the lawn-and-garden plant food industry with rigid specification standards and quality control. We check our products every step of the way, from incoming raw materials to in-process production to in-depth analytical release protocols.

As a result, we guarantee that the products you buy will consistently deliver the performance you expect.

Contact your Knox Fertilizer representative for complete information.

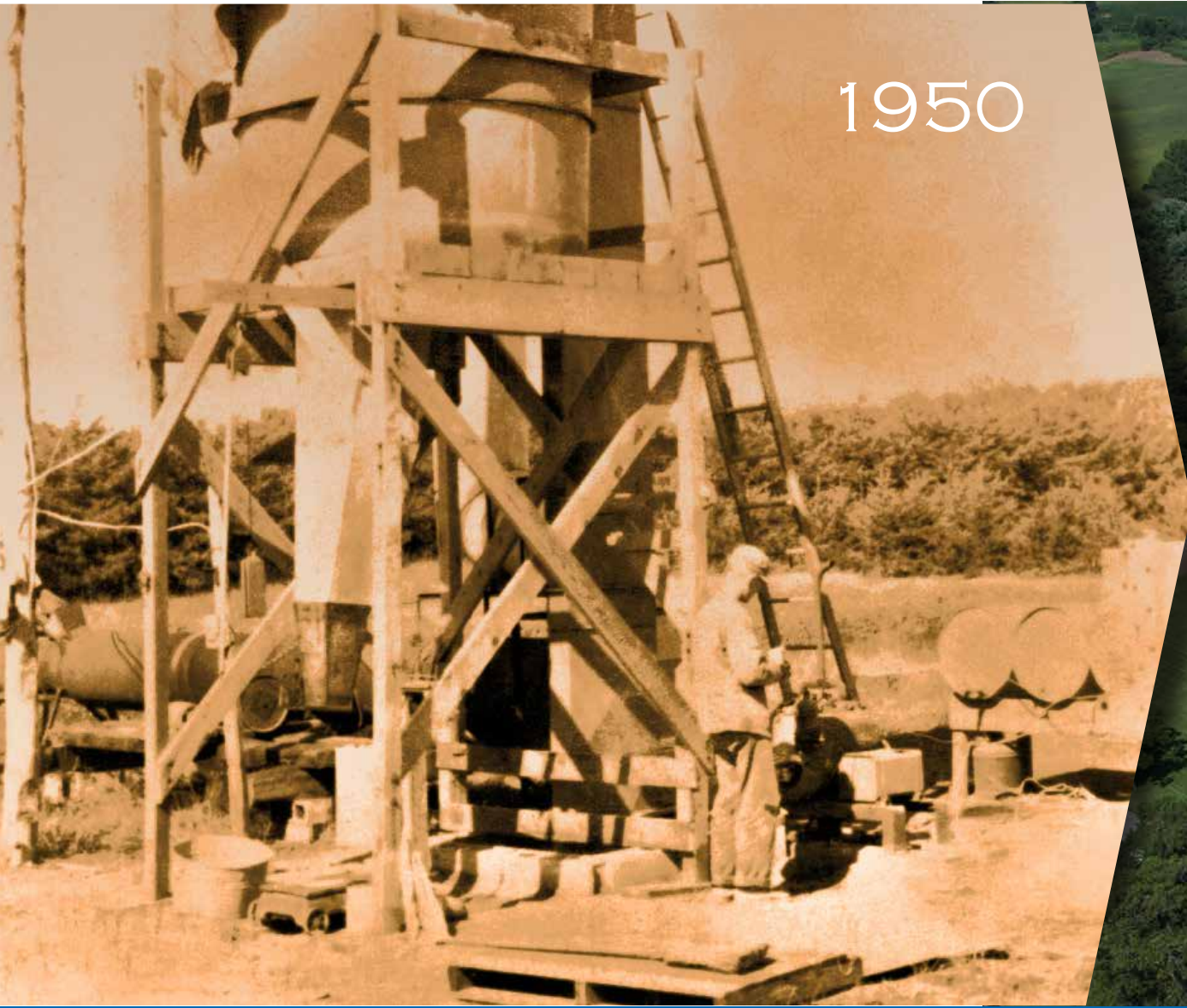


KNOX FERTILIZER COMPANY, INC. • P.O. Box 248 • KNOX, IN 46534
PHONE (574) 772-6275 • FAX (574) 772-5878 • WWW.KNOXFERT.COM

One & Done is a trademark and Shaw's, Gro-Gard, the Gro-Gard shield, Platinum and Surf are registered trademarks of Knox Fertilizer Company, Inc. XRT and SurfCote are registered trademarks of KMB Technologies, LLC. Acelepryn and Barricade are registered trademarks of a Syngenta Group Company. Merit, Allectus and Ronstar are registered trademarks of Bayer. Treflan and Dimension are registered trademarks of Dow AgroSciences LLC. Viper is a registered trademark of BASF.
©2017 Knox Fertilizer Company, Inc.



OUR FAMILY OF BRANDS

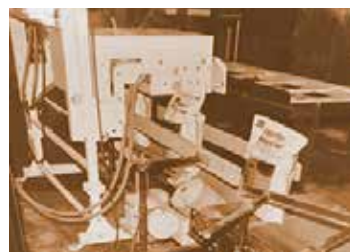


1950



TODAY

CARING FOR TURF IS A SHAW'S® FAMILY TRADITION.



Since 1950, the Shaw family has been recognized for quality lawn and professional turf care products.

Knox Fertilizer leads the lawn-and-garden plant food industry with rigid specification standards and quality release programs. Quality checks are performed on incoming raw materials, in-process production and analytical pass/fail release protocols. We guarantee that package claims are met and the products you buy are consistent day in and day out.

Our main facilities are in northwest Indiana, near Chicago. Being on the outskirts of this world trade center, we're ideally positioned to buy high-quality ingredients at low cost, and manufacture and ship products that provide the utmost in value for our customers.

Today, the third generation of the family is prepared to meet the challenges of the 21st century in environmental stewardship, quality packaging and structural management programs.

WE'RE PROUD OF OUR PAST AND POISED FOR THE FUTURE.

Knox Fertilizer has been in the specialty segment of the plant food business for over half a century. We've positioned ourselves for the next half-century with continuing investments in innovative production processes, product quality, structural management and environmental stewardship. This philosophy of reinvestment in the company has helped our products become recognized as leaders in consistent performance, quality and reliability.

We're committed to helping you meet the challenges of golf course turf management.

Today, turf managers are facing more turf management challenges than ever. Use is increasing, while water usage and environmental requirements are becoming more stringent. Knox is ready to help you meet all current and future challenges.

We have the products; we have the understanding. And we're ready to help you grow your best.



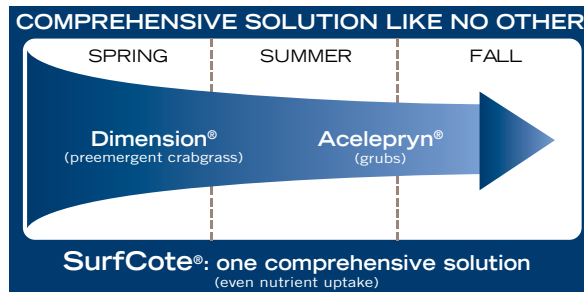


Founded in 1950, Shaw's has always been our premium line of fertilizers for quality lawn and professional turf care products. Our Shaw's brand contains controlled-release technology like XRT® and SurfCote® to deliver nutrients throughout the growing season. We offer prominent products like One & Done™ and Platinum under the Shaw's brand name. We always use branded chemistry in our value added fertilizers to offer you the peace of mind in your weed & insect control.



KNOX FERTILIZER COMPANY

Season-long fertilizer, weed and insect control for sports turf managers. One early shot of Shaw's Turf Food with Acelepryn® and Dimension® takes care of Crabgrass and grubs for the entire season. The advanced controlled release properties of SurfCote and XRT give sports turf managers the flexibility to address increasing regulations that restrict fertilizer and pesticide applications while schools are in session and/or require advance notification of parents. One early application of Shaw's Turf Food with added Acelepryn and Dimension feeds turf while it takes care of crabgrass, grubs, and other weed and insect pests during the playing season.



Micronized, dust-free pellets with patented technology that provides consistent, season-long release are at the heart of Platinum's success in delivering more usable nitrogen to your turf. Each uniform pellet contains the complete range of essential plant nutrients that are released slowly and consistently for an entire season, keeping greens, tees and fairways healthy and vigorous without risk of overconsumption or environmental issues. Platinum also offers: Less damage during shipping, handling and application due to the dust free formulations; Even spreading and canopy penetration, thanks to the small pellet size; Less run off and leaching because plants take up nutrients as fast as they are released; Low potential to burn due to the low salt index.



This is our "Best Value" line of fertilizers for general turf. For the price conscious shopper and end user, this line of fertilizers is ideal. The blends are formulated with our XRT Extended Release Fertilizer Technology. Our value added insect and weed control formulas also use branded chemistry to offer you peace of mind on the efficacy of the products.



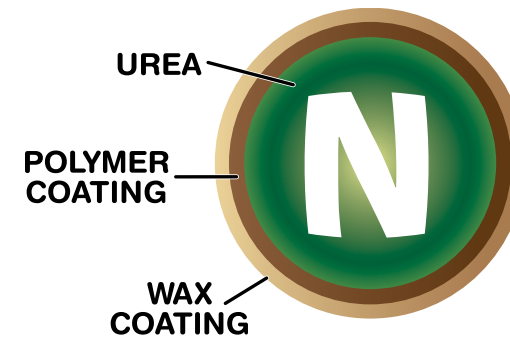
Gro-Gard® is a proprietary blend of two bio-active amino acids that help regulate nutrient uptake and movement within the plant. With greater nutrient availability, plants can achieve their full genetic potential for growth and vigor. With Gro-Gard, roots grow deeper and with greater mass, delivering a healthier, lusher and greener course all season long. Your turf is protected, even during the peak golf season, because nutrient delivery is enhanced during the entire season. Gro-Gard, which is formulated with a fertilizer, gives you the richest, greenest fairways and greens. And if you need flexibility, Gro-Gard is also available in Shaw's complete line of preemergent fertilizers that provide weed and insect control.

OUR PARTNERS IN CHEMISTRY

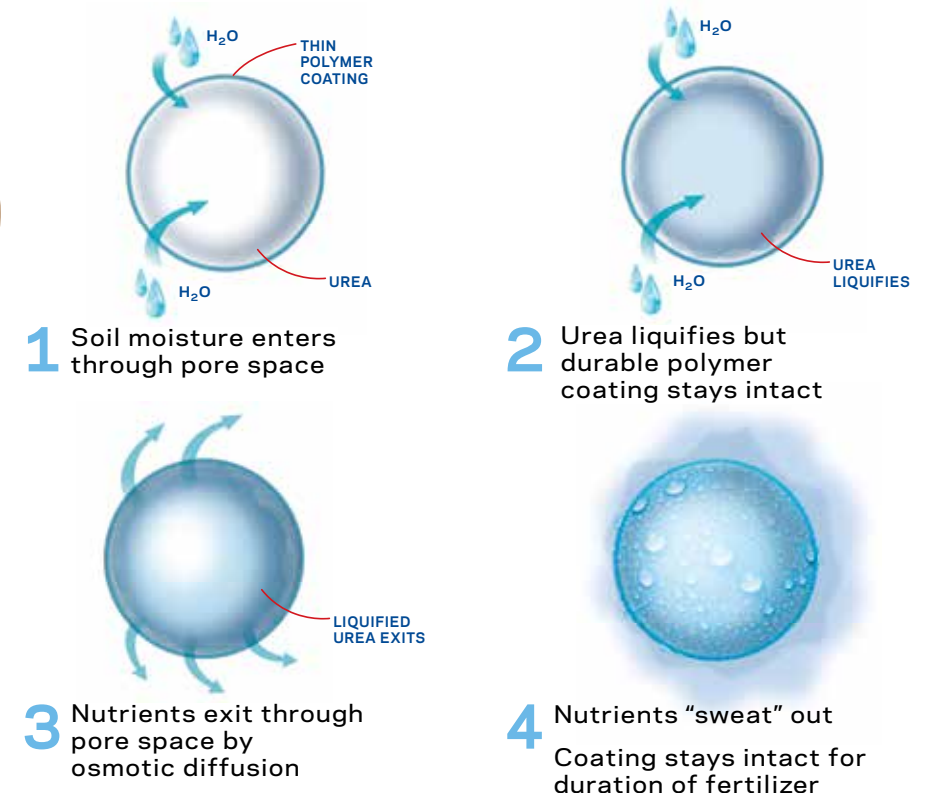


THE PATENTED POLYMER COATING USED WITH XRT® AND SURFCOTE® RELEASES NITROGEN IN THE SAME REGULAR PATTERN THAT REGULATES TURF DEMAND FOR NITROGEN.

PCU STATE OF THE ART TECHNOLOGY



Whether you need 90, 120 or 180 days of consistent, time-released fertilizer, Shaw's brand fertilizers will meet your needs.



GET THE XRT[®] ADVANTAGE!

Extended Release Fertilizer Technology

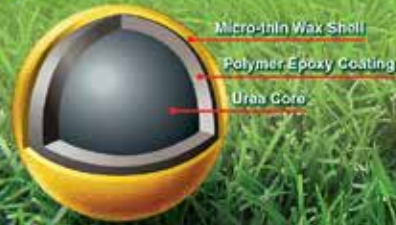
XRT[®]

- Epoxy Coating Technology
- Release range up to 3 months
- Consistent predictable release up to 90 days
- Unaffected by irrigation or rainfall
- Extremely durable coating
- Patented Coating Technology
- Very, very low burn potential
- Release by Osmotic Diffusion

VS.

SULFUR COATED UREA:

- Will release much faster than Polymer coating
- One release range (4-8 weeks)
- Unpredictable nitrogen release due to contact with water/rainfall and coating breakage
- Release by catastrophic failure of coating
- Will not deliver a constant nitrogen feeding during product lifespan
- Water penetrates the coating – the nitrogen release is rapid
- 1960's technology



www.knoxfert.com

XRT[®] EXTENDED-RELEASE FERTILIZER TECHNOLOGY

Products with the XRT technology extend nutrient release by up to 90 days, keeping turf and other crops healthy, lush and green all season long. With XRT, plants consistently receive the nutrients they need, when they need them, saving you time and money for multiple applications.

How it works.

XRT uses an innovative polymer resin to provide temperature-dependent nutrient release. As temperatures rise during the season, urea nitrogen is

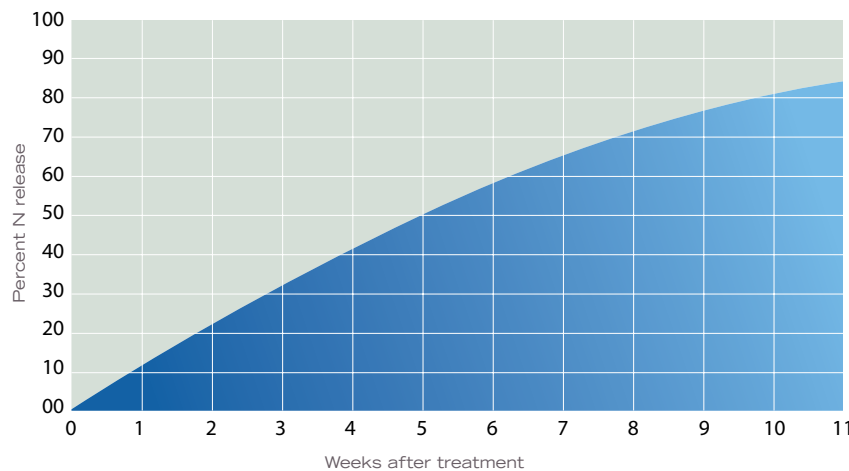
released at a consistent rate, matching nutrient demands of turf and specialty crops. After complete release, the polymer decomposes into naturally occurring compounds.

The XRT[®] Advantage:

- Uniform color and growth.
- Saves labor, time and energy.
- Improves nutrient efficiency.
- Improves environmental stewardship.
- Greener, healthier turf and specialty crops.
- Consistent release of nutrients for up to 90 days.
- Less potential loss of nutrients to air and groundwater.
- Enhances nutrient uptake through gradual nutrient release.
- Reduces N losses due to ammonia volatilization and leaching.

NITROGEN RELEASE VS. TIME

TVA test for coated nitrogen products



Premium Blended Fertilizers with XRT[®] Controlled-Release Nitrogen Technology

| Product Code | Analysis | SGN Size | Bag Weight (lbs.) | Coverage per Bag (sq. ft.) | Nitrogen Source | Units Slow Release | % Slow Release | Product (lbs. per 1,000 sq. ft.) | Nutrients (lbs. per 1,000 sq. ft.) | | | K Source |
|--------------|----------|----------|-------------------|----------------------------|-----------------|--------------------|----------------|----------------------------------|------------------------------------|-------------------------------|------------------|----------|
| | | | | | | | | | N | P ₂ O ₅ | K ₂ O | |



Shaw's[®] Straight XRT[®] Materials

| | | | | | | | | | | | | |
|---------|--------|-----|----|--------|-----|----------|------|------|------|------|------|---|
| 1496500 | 44-0-0 | 230 | 50 | 21,780 | XRT | 44.0 (N) | 100% | 2.28 | 1.00 | 0.00 | 0.00 | — |
| 1496539 | 44-0-0 | 150 | 50 | 21,780 | XRT | 44.0 (N) | 100% | 2.28 | 1.00 | 0.00 | 0.00 | — |



Shaw's[®] XRT[®] Blends (SGN Size 230)

| | | | | | | | | | | | | |
|---------|----------|-----|----|--------|-----|-------|-----|------|------|------|------|-----|
| 1504259 | 14-25-10 | 230 | 50 | 12,500 | XRT | 3.50 | 25% | 4.00 | 0.56 | 1.00 | 0.40 | MOP |
| 1519309 | 24-0-5 | 230 | 50 | 12,500 | XRT | 7.2 | 30% | 4 | 0.96 | 0.00 | 0.20 | MOP |
| 1519669 | 24-0-12 | 230 | 50 | 12,500 | XRT | 8.4 | 35% | 4 | 0.96 | 0.00 | 0.48 | SOP |
| 1550709 | 30-0-6 | 230 | 50 | 14,866 | XRT | 15.0 | 50% | 3.33 | 1.00 | 0.00 | 0.20 | MOP |
| 1550749 | 30-0-10 | 230 | 50 | 12,500 | XRT | 12.0 | 40% | 3.33 | 1.00 | 0.00 | 0.33 | SOP |
| 1566399 | 33-3-6 | 230 | 50 | 16,500 | XRT | 16.50 | 50% | 3.00 | 1.00 | 0.09 | 0.18 | MOP |
| 1567599 | 34-0-10 | 230 | 50 | 15,000 | XRT | 26.86 | 79% | 3.30 | 1.15 | 0.00 | 0.33 | MOP |
| 6542009 | 30-0-10 | 230 | 50 | 15,000 | XRT | 12.0 | 40% | 3.33 | 1.00 | 0.00 | 0.33 | MOP |
| 6542019 | 30-0-10 | 230 | 50 | 15,015 | XRT | 24.0 | 80% | 3.33 | 1.00 | 0.00 | 0.33 | MOP |



Shaw's[®] XRT[®] Fairway Blends with Gro-Gard[®] (SGN Size 150)

| | | | | | | | | | | | | |
|---------|---------|-----|----|--------|-----|------|------|------|------|------|------|-----|
| 6630909 | 24-0-8 | 150 | 50 | 12,500 | XRT | 15.6 | 65% | 4 | 0.96 | 0.00 | 0.32 | SOP |
| 1519309 | 25-0-5 | 150 | 50 | 12,500 | XRT | 12.5 | 50% | 4 | 1.00 | | 0.20 | SOP |
| 1519669 | 28-0-18 | 150 | 50 | 14,000 | XRT | 28.0 | 100% | 3.57 | 1.00 | 0.00 | 0.64 | MOP |

XRT = Polymer-Coated Urea (Up to 3-Month Nitrogen Release) MOP = Murate of Potash SOP = Sulfate of Potash



SURFCOTE® CONTROLLED-RELEASE TECHNOLOGY DELIVERS NUTRIENTS THROUGHOUT THE SEASON.

SurfCote has the most advanced controlled release fertilizer technology — an innovative and proprietary polymer resin encapsulation with a sustained release. Each fertilizer granule is encased in a durable microthin shell that allows soil moisture to gradually diffuse into the granule, dissolving the urea fertilizer. Rising temperatures liquefy the urea, which remains encapsulated, then slowly and consistently passes through the polymer to meet the ongoing nutrient demands of your turf.

Fertilizer granules with SurfCote are tougher than sulfur-based compounds. The integrity of the shell is protected against breakage with normal handling and abrasion. Reduced loss means more nutrients going to work on your turf, and less opportunity for leaching. With SurfCote, every blade of grass gets the nutrients it needs, when it needs them most.

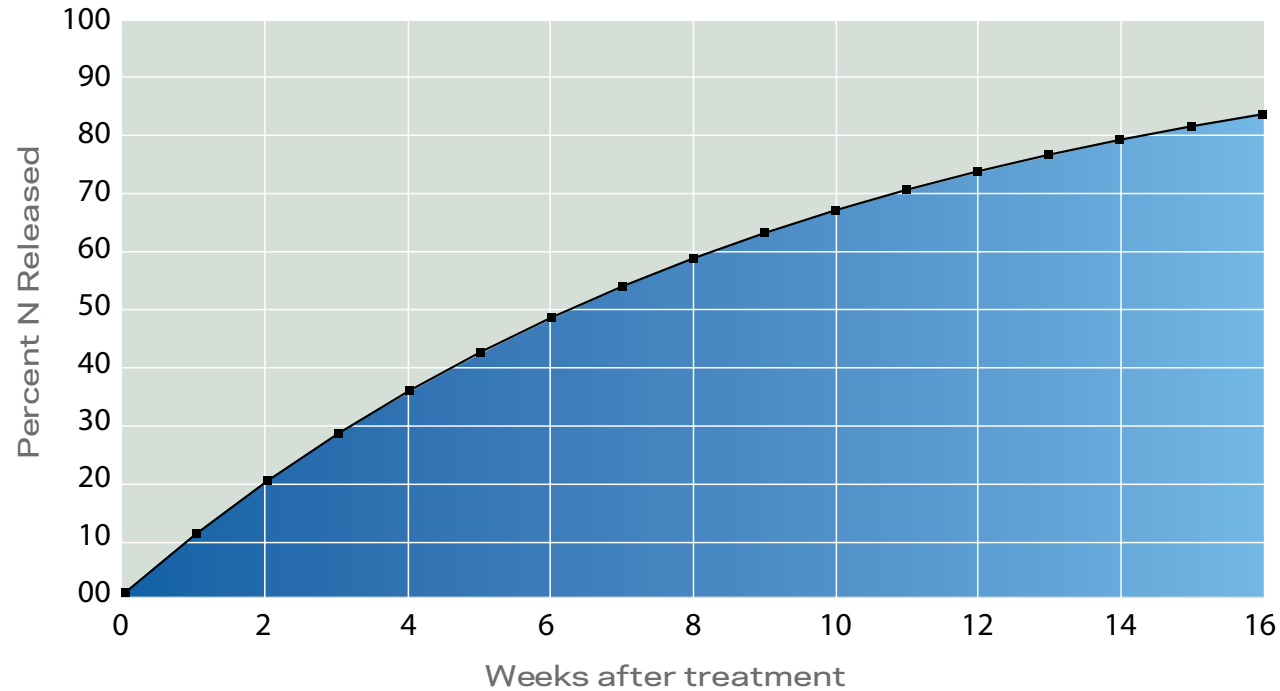
This means:

- Fewer applications, saving time, labor and energy costs.
- Greater uptake and more efficient use of fertilizer.
- Improved environmental stewardship through “on demand” release.
- Reduced potential for loss of nutrients in air and groundwater.

The SurfCote® Advantage:

- Reduces nitrogen loss due to ammonia volatilization and leaching.
- Improves nitrogen efficiency.
- Consistent release of nutrients throughout the season.
- Delivers uniform color and growth.
- Extremely durable shell for more consistent performance.
- Saves time and money.

NITROGEN RELEASE VS. TIME
SURFCOTE N-4



Premium Blended Fertilizers with Surf® Controlled-Release Technology

| Product Code | Analysis | SGN Size | Bag Weight (lbs.) | Coverage per Bag (sq. ft.) | Nitrogen Source | Units Slow Release | % Slow Release | Product (lbs. per 1,000 sq. ft.) | Nutrients (lbs. per 1,000 sq. ft.) | | | K Source |
|--------------|----------|----------|-------------------|----------------------------|-----------------|--------------------|----------------|----------------------------------|------------------------------------|-------------------------------|------------------|----------|
| | | | | | | | | | N | P ₂ O ₅ | K ₂ O | |

Shaw's® Straight Surf® Materials with Gro-Gard®

| | | | | | | | | | | | | |
|---------|--------|-----|----|--------|----------|-------------------------|------|------|------|------|------|--------|
| 1580009 | 44-0-0 | 230 | 50 | 17,600 | Surf N-4 | 44.0 (N) | 100% | 2.84 | 1.25 | 0.00 | 0.00 | — |
| 5589209 | 44-0-0 | 150 | 50 | 17,600 | Surf N-4 | 44.0 (N) | 100% | 2.84 | 1.25 | 0.00 | 0.00 | — |
| 5589229 | 43-0-0 | 230 | 50 | 10,750 | Surf N-6 | 43.0 (N) | 100% | 4.65 | 2.00 | 0.00 | 0.00 | — |
| 5500099 | 0-0-48 | 150 | 50 | 19,230 | — | 48.0 (K ₂ O) | 100% | 2.60 | 0.00 | 0.00 | 1.25 | PC-SOP |

Shaw's® Surf® Blends with Gro-Gard® (SGN Size 230)

| | | | | | | | | | | | | |
|---------|---------|-----|----|--------|----------|------|------|------|------|------|------|--------|
| 5500439 | 5-0-40 | 230 | 50 | 16,025 | Surf N-4 | 5.0 | 100% | 3.12 | 0.15 | 0.00 | 1.25 | PC-SOP |
| 5550759 | 30-0-15 | 230 | 50 | 12,000 | Surf N-4 | 30.0 | 100% | 4.16 | 1.25 | 0.00 | 0.62 | SOP |
| 5566109 | 33-0-12 | 230 | 50 | 13,190 | Surf N-4 | 33.0 | 100% | 3.79 | 1.25 | 0.00 | 0.45 | MOP |
| 5566149 | 33-0-12 | 230 | 50 | 13,190 | Surf N-6 | 33.0 | 100% | 3.79 | 1.25 | 0.00 | 0.45 | SOP |
| 5588109 | 36-0-6 | 230 | 50 | 12,000 | Surf N-6 | 36.0 | 100% | 4.16 | 1.50 | 0.00 | 0.25 | MOP |
| 5588509 | 38-0-6 | 230 | 50 | 15,195 | Surf N-4 | 38.0 | 100% | 3.29 | 1.25 | 0.00 | 0.19 | SOP |

Shaw's® Surf® Fairway Blends with Gro-Gard® (SGN Size 150)

| | | | | | | | | | | | | |
|---------|---------|-----|----|--------|----------|------|------|------|------|------|------|--------|
| 5614229 | 16-0-30 | 150 | 50 | 12,000 | Surf N-4 | 16.0 | 100% | 4.16 | 0.66 | 0.00 | 1.25 | PC-SOP |
| 5630509 | 24-0-22 | 150 | 50 | 9,600 | Surf N-4 | 24.0 | 100% | 5.21 | 1.25 | 0.00 | 1.14 | SOP |
| 5644419 | 25-0-18 | 150 | 50 | 9,600 | Surf N-4 | 25.0 | 100% | 5.00 | 1.25 | 0.00 | 0.90 | PC-SOP |
| 5646559 | 28-0-18 | 150 | 50 | 11,200 | Surf N-4 | 28.0 | 100% | 4.46 | 1.25 | 0.00 | 0.80 | SOP |
| 5647539 | 33-0-12 | 150 | 50 | 13,190 | Surf N-4 | 33.0 | 100% | 3.79 | 1.25 | 0.00 | 0.45 | SOP |

Surf N-4 = Polymer-Coated Urea (Up to 4-Month Nitrogen Release) Surf N-6 = Polymer-Coated Urea (Up to 6-Month Nitrogen Release)
MOP = Murate of Potash SOP = Sulfate of Potash PC-SOP = Polymer-Coated Sulfate of Potash



SEASON-LONG FERTILIZER AND CONTROL FOR SPORTS TURF MANAGERS.

One early shot of Shaw's® Turf Food with Acelepryn® and Dimension® takes care of crabgrass and grubs for the entire season. The advanced controlled-release properties of SurfCote® give sports turf managers the flexibility to address increasing regulations that restrict fertilizer and pesticide applications while schools are in session and/or require advance notification to parents. One early application of Shaw's Turf Food with added Acelepryn and Dimension feeds turf while it takes care of crabgrass, grubs, and other weed and insect pests during the playing season.

With Acelepryn, you get:

- Season-long control of grubs, residual cutworm, residual sod webworm, annual bluegrass weevil and billbugs.
- Low impact on nontarget organisms, including birds, honeybees, fish and mammals.
- Low risk — Acelepryn is classified as Reduced Risk by U.S. EPA and Health Canada, Pest Management Regulatory Agency.

With Dimension, you get:

- Excellent preemergence and early postemergence crabgrass control.
- Season-long control of other grasses and broadleaf weeds.
- No staining and low odor.



CROSS TWO
ITEMS OFF
YOUR LIST.

IN INK.

One early shot takes care of crabgrass and grubs for the whole season. Four years of proven results with our early-application, season-long protection will give you the confidence that a clean golf course brings.

To learn more, contact your local distributor.



ONE & DONE Shaw's® One & Done™ Blends with Gro-Gard® and Insect and Preemergent Weed Control

| Product Code | Analysis | Control Product | Acelepryn® A.I. per Acre | Control Product | Dimension® A.I. per Acre | Bag Weight (lbs.) | Coverage per Bag (sq. ft.) | Nitrogen Source | Units Slow Release | % Slow Release | Product (lbs. per 1,000 sq. ft.) | Nutrients (lbs. per 1,000 sq. ft.) | | | K Source |
|--------------|----------|-----------------|--------------------------|-----------------|--------------------------|-------------------|----------------------------|-----------------|--------------------|----------------|----------------------------------|------------------------------------|-------------------------------|------------------|----------|
| | | | | | | | | | | | | N | P ₂ O ₅ | K ₂ O | |

SURFCOTE Shaw's® Surf® Blends with Gro-Gard® and Insect and Preemergent Weed Control (SGN Size 230)

| | | | | | | | | | | | | | | | |
|---------|--------|-----------------|------|-----------------|------|----|--------|----------|------|------|------|------|------|------|--------|
| 5328319 | 40-0-0 | .067% Acelepryn | 0.10 | .130% Dimension | 0.20 | 50 | 14,520 | Surf N-6 | 40.0 | 100% | 3.40 | 1.36 | 0.00 | 0.00 | — |
| 5328999 | 36-0-6 | .067% Acelepryn | 0.10 | .167% Dimension | 0.25 | 50 | 14,520 | Surf N-4 | 36.0 | 100% | 3.40 | 1.23 | 0.00 | 0.20 | PC-SOP |
| 5329369 | 40-0-0 | .067% Acelepryn | 0.10 | .222% Dimension | 0.34 | 50 | 14,520 | Surf N-6 | 40.0 | 100% | 3.40 | 1.36 | 0.00 | 0.00 | — |
| 5329679 | 40-0-0 | .067% Acelepryn | 0.10 | .253% Dimension | 0.38 | 50 | 14,520 | Surf N-6 | 40.0 | 100% | 3.40 | 1.36 | 0.00 | 0.00 | — |

SURFCOTE Shaw's® Surf® Blends with Gro-Gard® and Insect and Preemergent Weed Control (SGN Size 150)

| | | | | | | | | | | | | | | | |
|---------|---------|-----------------|------|-----------------|------|----|--------|----------|------|------|------|------|------|------|--------|
| 5328979 | 30-0-10 | .067% Acelepryn | 0.10 | .167% Dimension | 0.25 | 50 | 14,520 | Surf N-4 | 36.0 | 100% | 3.40 | 1.02 | 0.00 | 0.34 | SOP |
| 5328989 | 36-0-6 | .067% Acelepryn | 0.10 | .167% Dimension | 0.25 | 50 | 14,520 | Surf N-4 | 36.0 | 100% | 3.40 | 1.23 | 0.00 | 0.20 | PC-SOP |
| 5329289 | 30-0-10 | .067% Acelepryn | 0.10 | .222% Dimension | 0.33 | 50 | 14,520 | Surf N-4 | 30.0 | 100% | 3.40 | 1.02 | 0.00 | 0.34 | SOP |
| 5329609 | 30-0-10 | .067% Acelepryn | 0.10 | .253% Dimension | 0.38 | 50 | 14,520 | Surf N-4 | 30.0 | 100% | 3.40 | 1.02 | 0.00 | 0.34 | SOP |

XRT Shaw's® XRT® Blends with Gro-Gard® and Insect and Preemergent Weed Control (SGN Size 230)

| | | | | | | | | | | | | | | | |
|---------|--------|-----------------|------|-----------------|------|----|--------|---------|------|------|------|------|------|------|-----|
| 6328719 | 0-0-7 | .067% Acelepryn | 0.10 | .167% Dimension | 0.25 | 50 | 14,520 | — | 0.0 | — | 3.40 | — | 0.00 | 0.24 | MOP |
| 6328869 | 30-0-0 | .067% Acelepryn | 0.10 | .167% Dimension | 0.25 | 50 | 14,520 | XRT N-3 | 30.0 | 100% | 3.40 | 1.02 | 0.00 | 0.00 | — |
| 6329579 | 30-0-0 | .067% Acelepryn | 0.10 | .253% Dimension | 0.38 | 50 | 14,520 | XRT N-3 | 30.0 | 100% | 3.40 | 1.02 | 0.00 | 0.00 | — |

XRT Shaw's® XRT® Blends with Gro-Gard® and Insect and Preemergent Weed Control (SGN Size 150)

| | | | | | | | | | | | | | | | |
|---------|--------|-----------------|------|-----------------|------|----|--------|---------|------|------|------|------|------|------|-----|
| 6328729 | 0-0-7 | .067% Acelepryn | 0.10 | .167% Dimension | 0.25 | 50 | 14,520 | — | 0.0 | — | 3.40 | — | 0.00 | 0.24 | SOP |
| 6328879 | 30-0-0 | .067% Acelepryn | 0.10 | .167% Dimension | 0.25 | 50 | 14,520 | XRT N-3 | 30.0 | 100% | 3.40 | 1.02 | 0.00 | 0.00 | — |

Surf N-4 = Polymer-Coated Urea (Up to 4-Month Nitrogen Release) Surf N-6 = Polymer-Coated Urea (Up to 6-Month Nitrogen Release) XRT N-3 = Polymer-Coated Urea (Up to 3-Month Nitrogen Release)
MOP = Muriate of Potash SOP = Sulfate of Potash PC-SOP = Polymer-Coated Sulfate of Potash

ONE & DONE Shaw's® One & Done™ Blend with Insect and Preemergent Weed Control

| Product Code | Analysis | Control Product | Acelepryn® A.I. per Acre | Control Product | Dimension® A.I. per Acre | Bag Weight (lbs.) | Coverage per Bag (sq. ft.) | Nitrogen Source | Units Slow Release | % Slow Release | Product (lbs. per 1,000 sq. ft.) | Nutrients (lbs. per 1,000 sq. ft.) | | | K Source |
|--------------|----------|-----------------|--------------------------|-----------------|--------------------------|-------------------|----------------------------|-----------------|--------------------|----------------|----------------------------------|------------------------------------|-------------------------------|------------------|----------|
| | | | | | | | | | | | | N | P ₂ O ₅ | K ₂ O | |

XRT Shaw's® XRT® Blends with Insect and Preemergent Weed Control (SGN Size 230)

| | | | | | | | | | | | | | | | |
|---------|--------|-----------------|------|-----------------|------|----|--------|---------|------|-----|------|------|------|------|-----|
| 1328909 | 17-0-5 | .067% Acelepryn | 0.10 | .167% Dimension | 0.25 | 50 | 14,520 | XRT N-3 | 5.10 | 30% | 3.40 | 0.58 | 0.00 | 0.17 | MOP |
|---------|--------|-----------------|------|-----------------|------|----|--------|---------|------|-----|------|------|------|------|-----|

XRT N-3 = Polymer-Coated Urea (Up to 3-Month Nitrogen Release) MOP = Muriate of Potash

Shaw's® Premium Blends with Preemergent Weed Control

| Product Code | Analysis | Control Product | % Active | Active Ingredient per Acre | Bag Weight (lbs.) | Coverage per Bag (sq. ft.) | Nitrogen Source | Units Slow Release | % Slow Release | Product (lbs. per 1,000 sq. ft.) | Nutrients (lbs. per 1,000 sq. ft.) | | | K Source |
|--------------|----------|-----------------|----------|----------------------------|-------------------|----------------------------|-----------------|--------------------|----------------|----------------------------------|------------------------------------|-------------------------------|------------------|----------|
| | | | | | | | | | | | N | P ₂ O ₅ | K ₂ O | |

Shaw's® Surf® Blends with and Preemergent Weed Control (SGN Size 230)

| | | | | | | | | | | | | | | |
|---------|---------|-----------|-------|------|----|--------|----------|------|------|------|------|------|------|--------|
| 5112069 | 5-0-40 | Barricade | 0.28% | 0.5 | 50 | 11,111 | Surf N-4 | 5.0 | 100% | 4.50 | 0.22 | 0.00 | 1.80 | PC-SOP |
| 5112999 | 33-0-12 | Barricade | 0.28% | 0.5 | 50 | 11,111 | Surf N-4 | 33.0 | 100% | 4.50 | 1.48 | 0.00 | 0.54 | MOP |
| 5113769 | 25-0-8 | Barricade | 0.38% | 0.7 | 50 | 12,500 | Surf N-4 | 25.0 | 100% | 4.00 | 1.00 | 0.00 | 0.32 | MOP |
| 5113969 | 40-0-0 | Barricade | 0.38% | 0.7 | 50 | 12,500 | Surf N-6 | 40.0 | 100% | 4.00 | 1.60 | 0.00 | 0.00 | — |
| 5114299 | 36-0-6 | Dimension | 0.10% | 0.18 | 50 | 12,500 | Surf N-6 | 36.0 | 100% | 4.00 | 1.40 | 0.00 | 0.20 | MOP |

Shaw's® Surf® Blends with and Preemergent Weed Control (SGN Size 150)

| | | | | | | | | | | | | | | |
|---------|---------|-----------|-------|-------|----|--------|----------|------|------|------|------|------|------|-----|
| 5114379 | 28-0-10 | Dimension | 0.13% | 0.227 | 50 | 12,500 | Surf N-4 | 28.0 | 100% | 4.00 | 1.12 | 0.00 | 0.40 | SOP |
| 5121099 | 30-0-4 | Ronstar | 1.00% | 2 | 50 | 10,893 | Surf N-4 | 30.0 | 100% | 4.59 | 1.48 | 0.00 | 0.18 | SOP |
| 5121379 | 30-0-4 | Ronstar | 1.50% | 2 | 50 | 16,339 | Surf N-4 | 30.0 | 100% | 4.00 | 3.06 | 0.00 | 0.12 | SOP |

Shaw's® XRT® Blends with and Preemergent Weed Control (SGN Size 230)

| | | | | | | | | | | | | | | |
|---------|--------|-----------|-------|------|----|--------|-----|------|------|------|------|------|------|-----|
| 1112099 | 13-0-5 | Barricade | 0.28% | 0.5 | 50 | 12,500 | XRT | 2.6 | 20% | 4.00 | 0.52 | 0.00 | 0.20 | MOP |
| 1112499 | 20-0-4 | Barricade | 0.28% | 0.5 | 50 | 12,500 | XRT | 7.0 | 35% | 4.00 | 0.80 | 0.00 | 0.16 | MOP |
| 1112909 | 31-0-4 | Barricade | 0.28% | 0.5 | 50 | 12,500 | XRT | 31.0 | 100% | 4.00 | 1.24 | 0.00 | 0.16 | MOP |
| 1113269 | 15-0-5 | Barricade | 0.38% | 0.66 | 50 | 12,500 | XRT | 3.8 | 25% | 4.00 | 0.60 | 0.00 | 0.20 | MOP |
| 1114229 | 19-0-5 | Dimension | 0.10% | 0.18 | 50 | 12,500 | XRT | 6.7 | 35% | 4.00 | 0.76 | 0.00 | 0.20 | MOP |
| 1114379 | 20-0-4 | Dimension | 0.13% | 0.23 | 50 | 12,500 | XRT | 7.0 | 35% | 4.00 | 0.80 | 0.00 | 0.16 | MOP |

Shaw's® XRT® Fairway Blends with and Preemergent Weed Control (SGN Size 150)

| | | | | | | | | | | | | | | |
|---------|---------|-----------|-------|-----|----|--------|-----|------|------|------|-------|------|------|-----|
| 6113959 | 30-0-0 | Barricade | 0.38% | 0.7 | 50 | 12,500 | XRT | 30.0 | 100% | 4.00 | 1.20 | 0.00 | 0.00 | — |
| 6114369 | 25-0-10 | Dimension | 0.13% | 0.2 | 50 | 14,160 | XRT | 25.0 | 100% | 3.50 | 0.875 | 0.00 | 0.35 | SOP |
| 6114379 | 30-0-0 | Dimension | 0.13% | 0.2 | 50 | 14,160 | XRT | 30.0 | 100% | 3.50 | 1.05 | 0.00 | 0.00 | — |
| 6114459 | 25-0-10 | Dimension | 0.17% | 0.3 | 50 | 14,535 | XRT | 25.0 | 100% | 3.40 | 0.85 | 0.00 | 0.34 | SOP |

* Always refer to the pesticide label for prescribed application rates. Those listed in the tables above are *only* a guide.

Surf N-4 = Polymer-Coated Urea (Up to 4-Month Nitrogen Release) **Surf N-6** = Polymer-Coated Urea (Up to 6-Month Nitrogen Release) **XRT** = Polymer-Coated Urea (Up to 3-Month Nitrogen Release)

MOP = Murate of Potash **SOP** = Sulfate of Potash **PC-SOP** = Polymer-Coated Sulfate of Potash

Shaw's® Premium Blends with Insect Control

| Product Code | Analysis | Control Product | % Active | Active Ingredient per Acre | Bag Weight (lbs.) | Coverage per Bag (sq. ft.) | Nitrogen Source | Units Slow Release | % Slow Release | Product (lbs. per 1,000 sq. ft.) | Nutrients (lbs. per 1,000 sq. ft.) | | | K Source |
|--------------|----------|-----------------|----------|----------------------------|-------------------|----------------------------|-----------------|--------------------|----------------|----------------------------------|------------------------------------|-------------------------------|------------------|----------|
| | | | | | | | | | | | N | P ₂ O ₅ | K ₂ O | |

Shaw's® Surf® Blends with and Insect Control (SGN Size 230)

| | | | | | | | | | | | | | | |
|---------|---------|-----------|--------|-----|----|--------|----------|------|------|------|------|------|------|-----|
| 5327969 | 33-0-12 | Acelepryn | 0.067% | 0.1 | 50 | 14,520 | Surf N-4 | 33.0 | 100% | 3.40 | 1.12 | 0.00 | 0.40 | MOP |
|---------|---------|-----------|--------|-----|----|--------|----------|------|------|------|------|------|------|-----|

Shaw's® Surf® Blends with and Insect Control (SGN Size 150)

| | | | | | | | | | | | | | | |
|---------|---------|-----------|--------|-----|----|--------|----------|------|------|------|------|------|------|-----|
| 5308549 | 33-0-10 | Merit | 0.20% | 0.3 | 50 | 14,286 | Surf N-4 | 33.0 | 100% | 3.50 | 1.15 | 0.00 | 0.35 | SOP |
| 5327809 | 33-0-10 | Acelepryn | 0.067% | 0.1 | 50 | 14,520 | Surf N-4 | 33.0 | 100% | 3.40 | 1.12 | 0.00 | 0.34 | SOP |

Shaw's® XRT® Blends and Insect Control (SGN Size 230)

| | | | | | | | | | | | | | | |
|---------|--------|-----------|--------|------|----|--------|------|------|-----|------|------|------|------|-----|
| 1308389 | 7-0-0 | Merit | 0.20% | 0.3 | 50 | 14,286 | Urea | 0.0 | 0% | 3.50 | 0.25 | 0.00 | 0.00 | — |
| 1308449 | 21-0-4 | Merit | 0.20% | 0.3 | 50 | 14,286 | XRT | 10.5 | 50% | 3.50 | 0.73 | 0.00 | 0.14 | MOP |
| 1327409 | 21-0-4 | Acelepryn | 0.07% | 0.1 | 50 | 14,520 | XRT | 10.5 | 50% | 3.40 | 0.71 | 0.00 | 0.13 | MOP |
| 1323009 | 21-0-5 | Allectus® | 0.225% | 0.35 | 50 | 14,052 | XRT | 10.5 | 50% | 3.50 | 0.73 | 0.00 | 0.17 | MOP |

Shaw's® XRT® Fairway Blends with and Insect Control (SGN Size 150)

| | | | | | | | | | | | | | | |
|---------|---------|-----------|--------|-----|----|--------|-----|------|------|------|------|------|------|-----|
| 6327819 | 28-0-10 | Acelepryn | 0.067% | 0.1 | 50 | 14,520 | XRT | 28.0 | 100% | 3.40 | 0.95 | 0.00 | 0.34 | SOP |
|---------|---------|-----------|--------|-----|----|--------|-----|------|------|------|------|------|------|-----|

Surf N-4 = Polymer-Coated Urea (Up to 4-Month Nitrogen Release) **XRT** = Polymer-Coated Urea (Up to 3-Month Nitrogen Release)

MOP = Murate of Potash **SOP** = Sulfate of Potash

Shaw's® Blends with Postemergent Herbicide

| Product Code | Analysis | Control Product | % Active | Active Ingredient per Acre | Bag Weight (lbs.) | Coverage per Bag (sq. ft.) | Nitrogen Source | Units Slow Release | % Slow Release | Product (lbs. per 1,000 sq. ft.) | Nutrients (lbs. per 1,000 sq. ft.) | | | K Source |
|--------------|----------|-----------------|----------|----------------------------|-------------------|----------------------------|-----------------|--------------------|----------------|----------------------------------|------------------------------------|-------------------------------|------------------|----------|
| | | | | | | | | | | | N | P ₂ O ₅ | K ₂ O | |



Shaw's® XRT® Blends with Viper® Postemergent Herbicide (SGN Size 150)

| | | | | | | | | | | | | | | |
|---------|--------|--------|-------|------|----|--------|-----|------|-----|------|------|------|------|-----|
| 1281629 | 15-0-5 | Viper® | 1.58% | 2.75 | 40 | 10,000 | XRT | 3.75 | 25% | 4.00 | 0.60 | 0.00 | 0.20 | MOP |
|---------|--------|--------|-------|------|----|--------|-----|------|-----|------|------|------|------|-----|

XRT = Polymer-Coated Urea (Up to 3-Month Nitrogen Release) MOP = Murate of Potash

Homogeneous Controlled Release Fertilizers

| Product Code | Analysis | SGN Size | Bag Weight (lbs.) | Coverage per Bag (sq. ft.) | Nitrogen Source | Units Slow Release | % Slow Release | Product (lbs. per 1,000 sq. ft.) | Nutrients (lbs. per 1,000 sq. ft.) | | | K Source |
|--------------|----------|----------|-------------------|----------------------------|-----------------|--------------------|----------------|----------------------------------|------------------------------------|-------------------------------|------------------|----------|
| | | | | | | | | | N | P ₂ O ₅ | K ₂ O | |



Shaw's® Platinum Fairway Fertilizers with Gro-Gard (SGN Size 160)

| | | | | | | | | | | | | |
|---------|---------|-----|----|--------|--------|------|-----|------|------|------|------|-----|
| 6626429 | 19-0-19 | 160 | 50 | 10,500 | MU | 14.0 | 73% | 4.76 | 0.90 | 0.00 | 0.90 | SOP |
| 6610859 | 11-2-11 | 160 | 50 | 10,500 | MU/ORG | 8.5 | 77% | 4.75 | 0.52 | 0.10 | 0.52 | SOP |



Shaw's® Platinum Greens Grade Fertilizers with Gro-Gard (SGN Size 90)

| | | | | | | | | | | | | |
|---------|---------|----|----|--------|--------|------|-----|------|------|------|------|-----|
| 6680919 | 19-0-19 | 90 | 50 | 10,500 | MU | 14.0 | 73% | 4.76 | 0.90 | 0.00 | 0.90 | SOP |
| 6664979 | 11-2-11 | 90 | 50 | 10,500 | MU/ORG | 8.5 | 77% | 4.75 | 0.52 | 0.10 | 0.52 | SOP |

ORG = Composted Chicken Poultry MU = Methylene Urea SOP = Sulfate of Potash

Shaw's® Water Soluble Fertilizers

| Product Code | Analysis | SGN Size | Bag Weight (lbs.) | Nitrogen Source | K Source |
|--------------|----------|---------------|-------------------|-----------------|----------|
| 6700629 | 14-32-16 | Water Soluble | 25 | Urea | MOP |
| 6700849 | 20-20-20 | Water Soluble | 25 | Urea | NOP |
| 6701789 | 31-3-15 | Water Soluble | 25 | Urea | NOP |
| 6702909 | 46-0-0 | Sprayable | 25 | Urea | — |

NOP = Nitrate of Potash MOP = Murate of Potash

FAQ's

Frequently Asked Questions

Q: What does XRT® stand for?

A: **E**xtended **R**elease **T**echnology

Q: What does Surf stand for in SurfCote®?

A: **S**ustained **U**niform **R**elease **F**ertilizer

Q: What is the difference between XRT® and SurfCote®?

A: The most obvious difference is XRT® is yellow and SurfCote® is blue. XRT is only available in a "Up to 90 day" controlled release and SurfCote is available in "Up to 120, 180 and 270 day" controlled release. The SurfCote has a thicker polymer resin to allow for a longer release curve.

Q: Why do Shaw's One & Done™ products seem to cost more per bag than it's competitors?

A: You cannot just look at the cost per bag as the determining factor. Each formulation is a little different. However, what you should be looking at is the amount of lbs. of N and AI that go down per acre, then look at the bag costs. What you find in most cases is the price is very similar or we are cheaper per acre or use fewer lbs./bags per acre.

Q: What is the difference between Surf-4, Surf-6 and Surf-9?

A: Each number represents how many months of controlled release fertilizer that is in the bag.

Q: I use a 45 day release fertilizer. Do you offer XRT or SurfCote in a 45 Day product?

A: Our XRT nutrient release products are the closest we have to 45 days. In most instances, you will find our 90 day products to be priced on par with 45 day blends which means you can offer your customers a better product for same or similar price.

Q: Can you make me a custom blend?

A: In most cases we can create a custom blend for you. Contact your territory sales manager for details.

Q: Can I buy direct from Knox Fertilizer?

A: We sell through two step distribution and utilize a distributor network. Contact your territory sales manager for a list of distributors who carry the product in your area.

Q: I use SCU now. What product would be similar in cost and efficacy?

A: XRT is the closet product we offer to SCU. XRT has a longer more predictable release range, it's unaffected by irrigation and rainfall, has a low burn potential and has an extremely durable coating.

Q: How do I apply the fertilizer and how much?

A: Broadcast spreaders are best to use with our fertilizers. Drop spreaders can be used but caution needs to be given not to skip any areas and cause uneven striping. Broadcast spreaders are more forgiving and are much quicker. XRT should be applied at 1 lb of Nitrogen per thousand square feet. SurfCote-4 products should be applied at 1.25 lbs, SurfCote-6 at 1.75 lbs and SurfCote-9 at 2.25 lbs of Nitrogen per thousand square feet respectively. Please seek advice from your distributor representative if you have any questions regarding proper application procedures.

